

# Pourqoy (Ronde)

Tielman Susato

Descant

Treble

Tenor

Bass

This system contains the first four measures of the piece. It features four staves: Descant (soprano), Treble (alto), Tenor (tenor), and Bass (bass). The key signature has two flats (B-flat and E-flat), and the time signature is 3/4. The music is in a 3/4 time signature. The first measure is marked with a repeat sign. Checkmarks are placed above the notes in measures 2, 3, and 4.

5

This system contains measures 5 through 8. The notation continues across the four staves. Checkmarks are placed above the notes in measures 6, 7, and 8.

9

This system contains measures 9 through 12. The notation continues across the four staves. Checkmarks are placed above the notes in measures 10, 11, and 12.

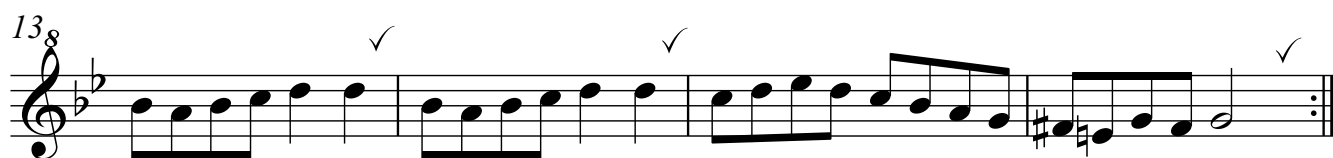
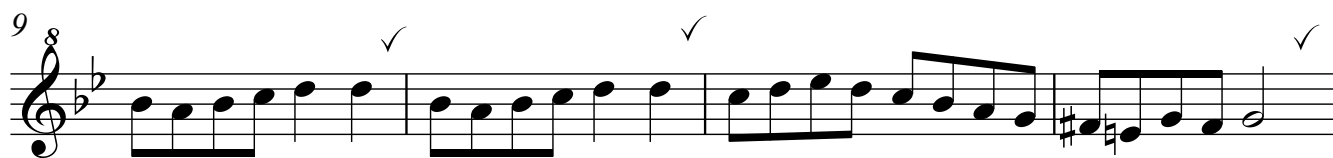
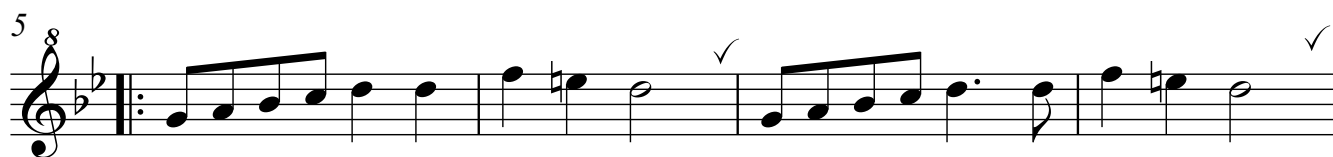
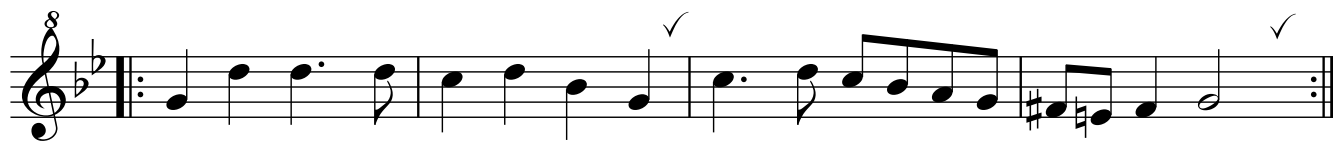
13

This system contains measures 13 through 16. The notation continues across the four staves. Checkmarks are placed above the notes in measures 14, 15, and 16.

Descant

# Pourqoy (Ronde)

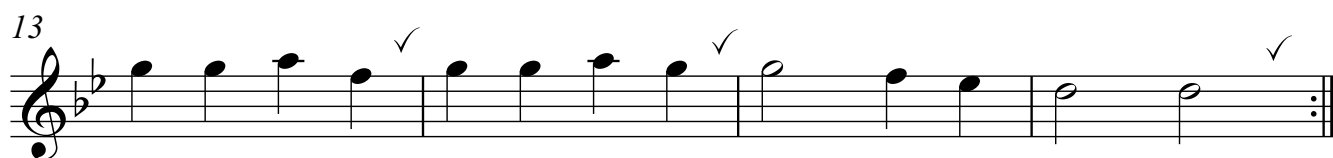
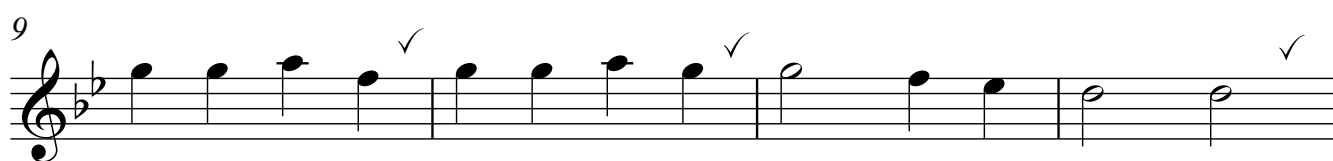
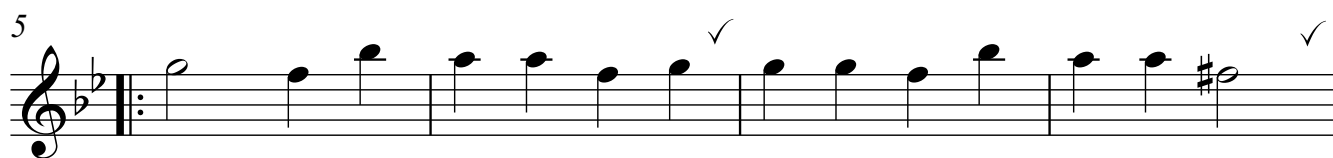
Tielman Susato



Treble

# Pourqoy (Ronde)

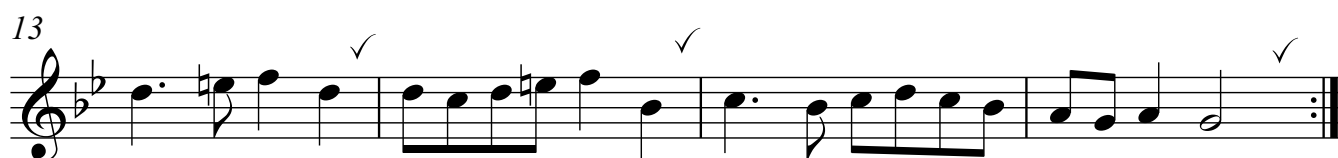
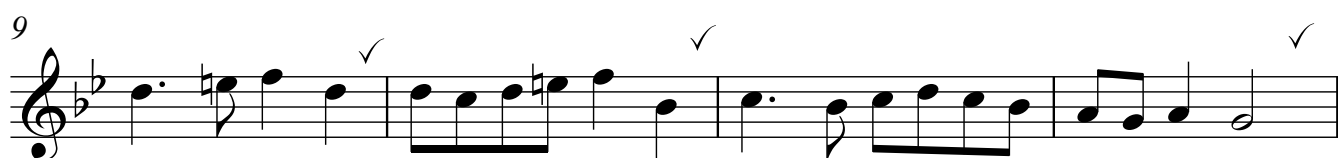
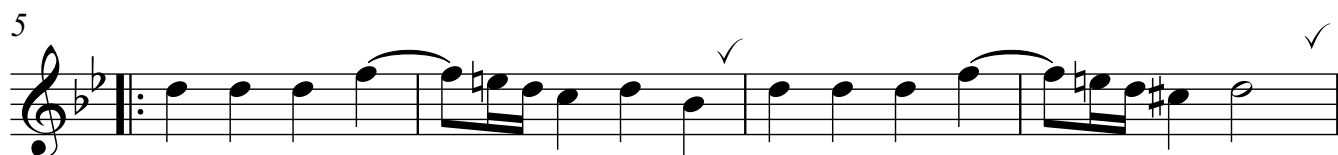
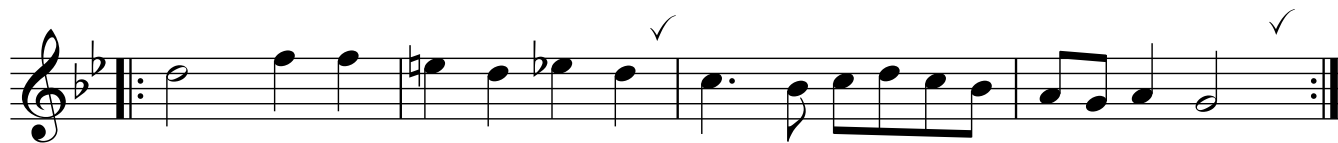
Tielman Susato



Tenor

# Pourqoy (Ronde)

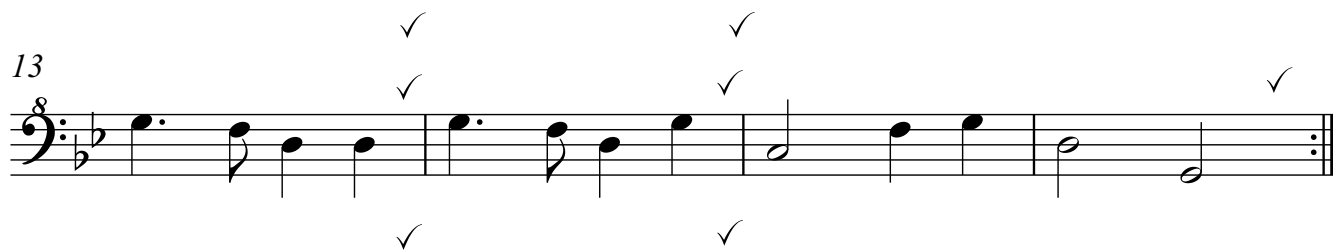
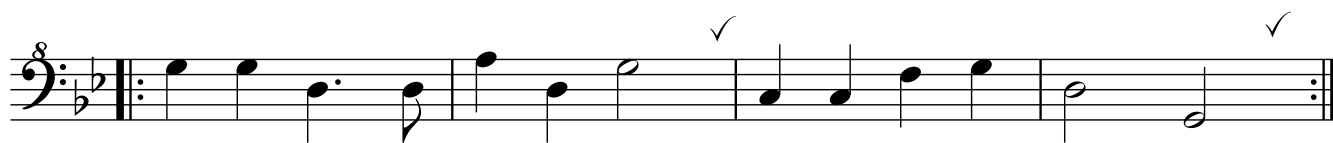
Tielman Susato



Bass

# Pourqoy (Ronde)

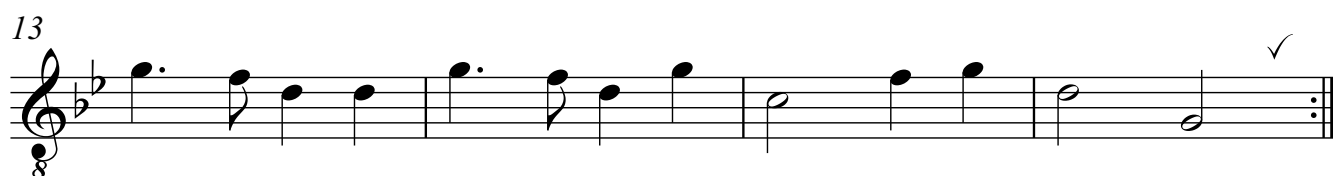
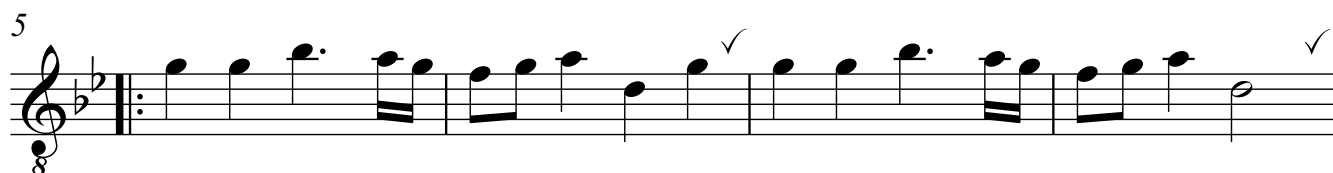
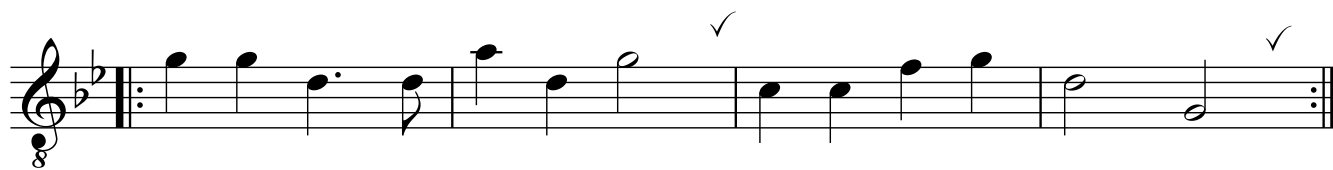
Tielman Susato



Bass (treble clef)

# Pourqoy (Ronde)

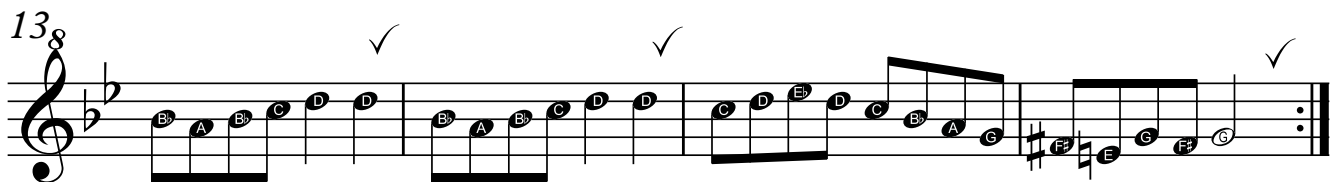
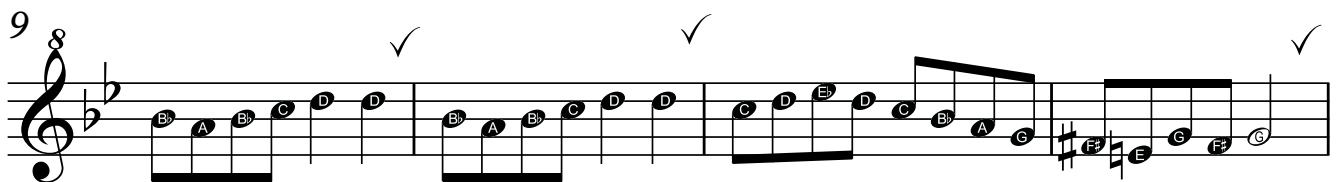
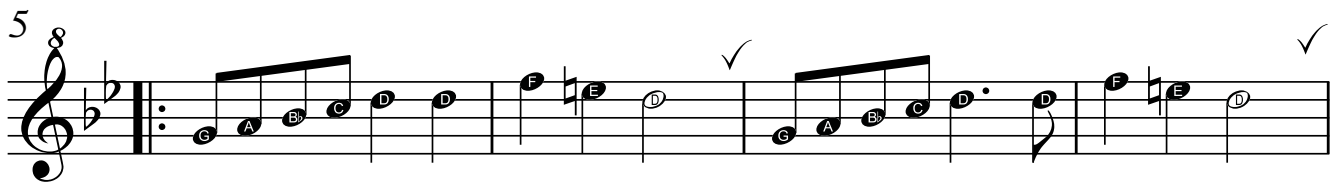
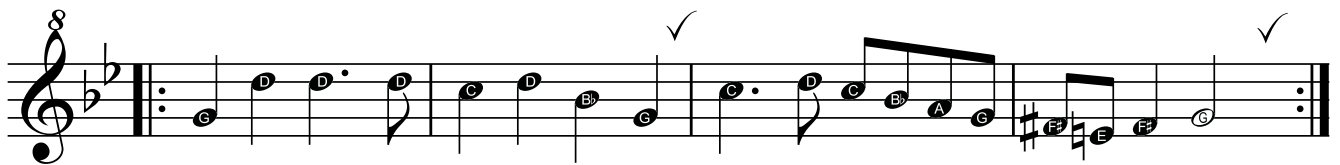
Tielman Susato



Descant

# Pourqoy (Ronde)

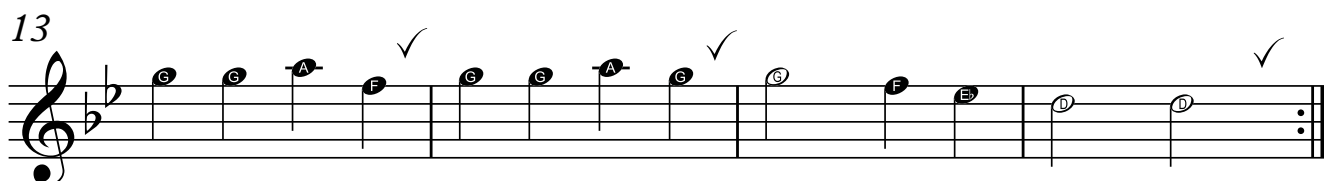
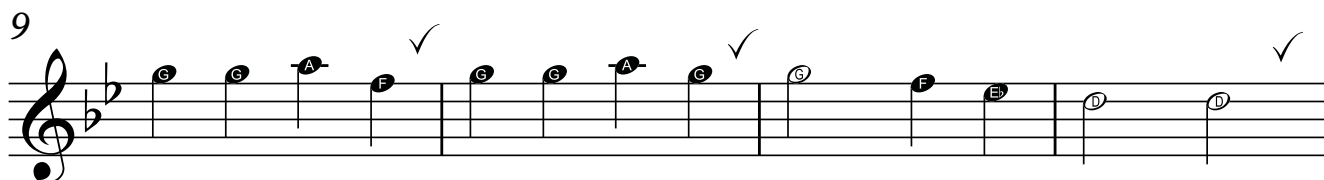
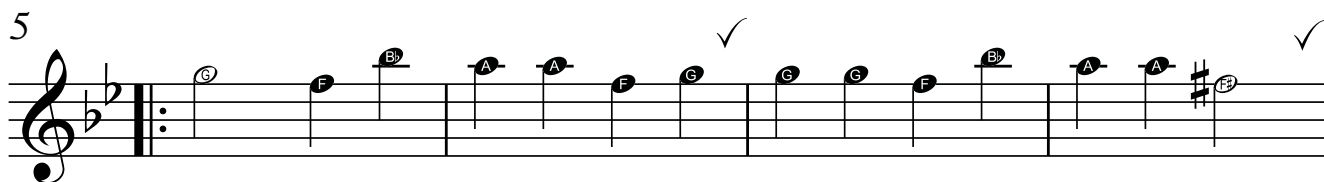
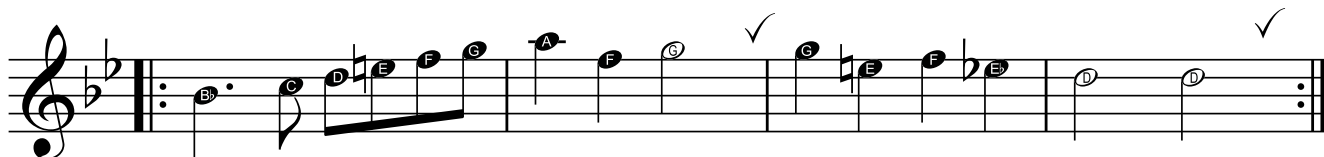
Tielman Susato



Treble

# Pourqoy (Ronde)

Tielman Susato

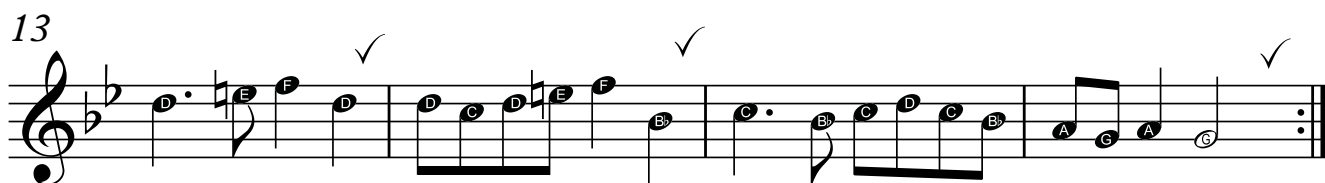
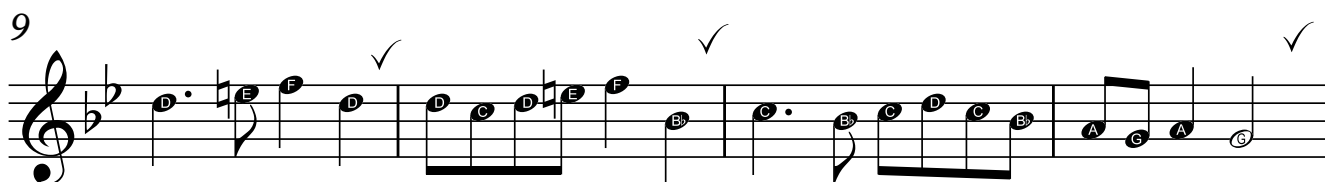
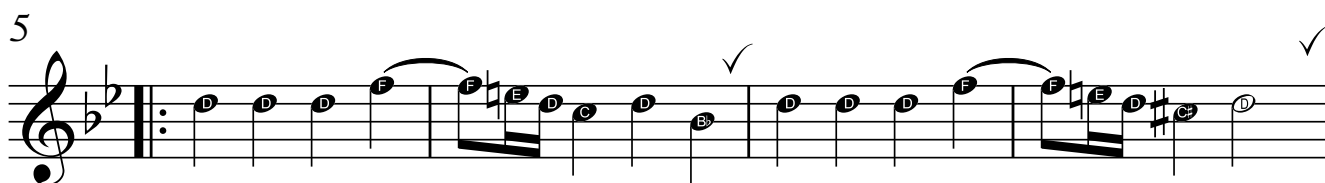
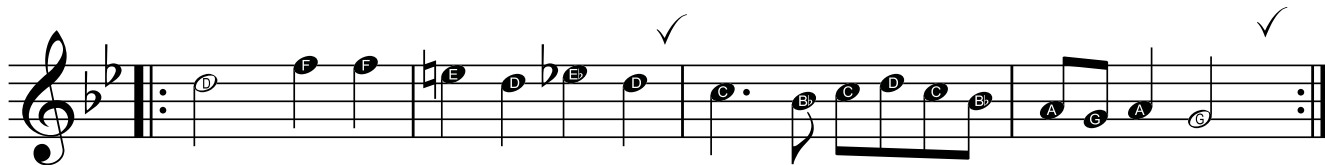




Tenor

# Pourqoy (Ronde)

Tielman Susato



Bass (treble clef) **Pourqoy (Ronde)**

Tielman Susato

1 2 3 4

5 6 7 8

9 10 11 12

13 14 15 16