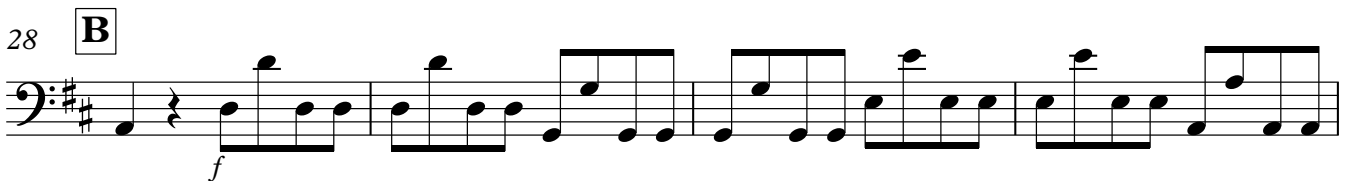
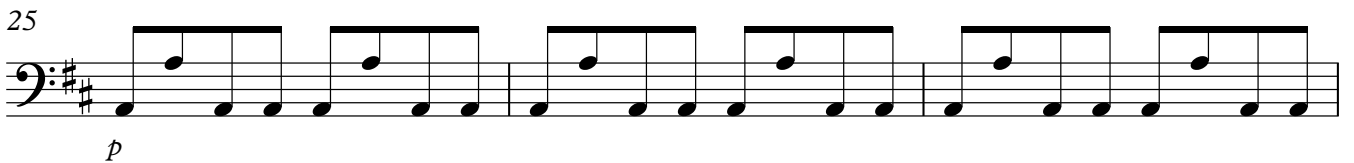
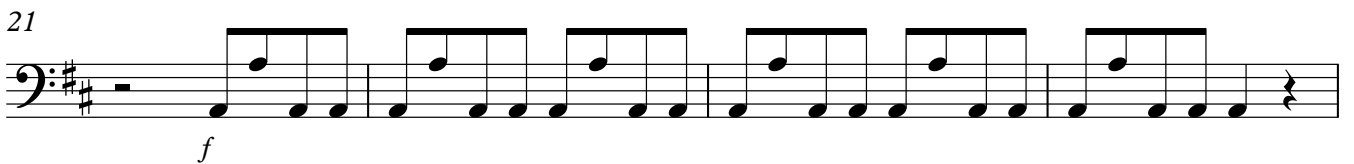
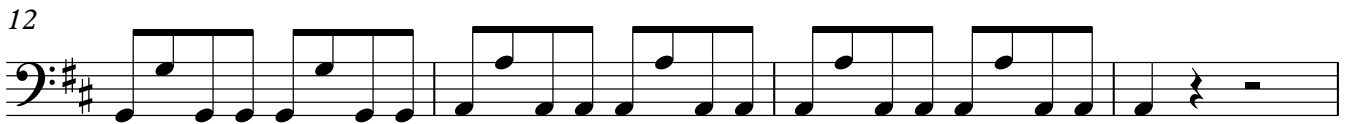
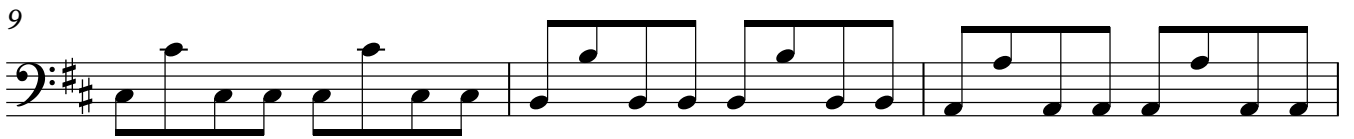
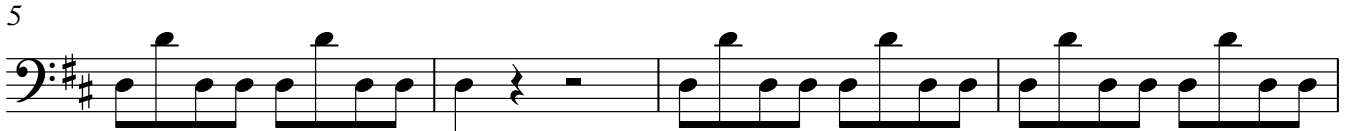


GLORIA

1. Gloria in Excelsis

Cello 1



Cello 1

36

C

Measures 36-40: Bass clef, key signature of two sharps (F# and C#). Measure 36 has a whole rest. Measure 37 has a whole note chord C. Measures 38-40 contain eighth-note patterns.

41

Measures 41-44: Bass clef, key signature of two sharps. Measures 41-44 contain eighth-note patterns.

45

Measures 45-48: Bass clef, key signature of two sharps. Measures 45-48 contain eighth-note patterns.

49

D

Measures 49-52: Bass clef, key signature of two sharps. Measure 49 has a whole rest. Measure 50 has a whole note chord D. Measures 51-52 contain eighth-note patterns.

53

Measures 53-56: Bass clef, key signature of two sharps. Measures 53-56 contain eighth-note patterns.

57

E

Measures 57-60: Bass clef, key signature of two sharps. Measure 57 has a whole note chord E. Measures 58-60 contain eighth-note patterns.

61

Measures 61-63: Bass clef, key signature of two sharps. Measures 61-63 contain eighth-note patterns.

64

Measures 64-67: Bass clef, key signature of two sharps. Measures 64-67 contain eighth-note patterns. Measure 67 ends with a fermata.

68

F

Measures 68-71: Bass clef, key signature of two sharps. Measure 68 has a whole note chord F. Measures 69-71 contain eighth-note patterns. Measure 71 ends with a fermata.